

## Installation

### • Simple and quick installation.

SGG PLANILAQUE EVOLUTION can only be used in interior applications and must comply with current national regulations.

SGG PLANILAQUE EVOLUTION can be glazed :

- mechanically, either into glazing channels or trims, or with appropriate fixing screws.
- adhesively, using neutral translucent silicones or adhesives, or double-sided white adhesive pads. If in doubt of the compatibility of the adhesive, it is essential to test its reaction with the lacquer (and safety film backing if appropriate). We strongly recommend also using mechanical restraints, such as top and bottom j-channels, in conjunction with any adhesive glazing.

SGG PLANILAQUE EVOLUTION must not be fitted directly in front of nor behind a strong source of heat, eg a cooker hob.

### • Maintenance

Clean regularly with a soft, clean cloth and a regular glass cleaning product (neutral and non-abrasive).

### Tips for successful installation !

Whatever technique is used for fixing SGG PLANILAQUE EVOLUTION, you must always:

- install the product in front of an opaque surface, with the lacquered face towards the wall.
- fix the lacquered glass to a supporting wall or surface that is true and flat, clean, dry and free of any aggressive agents.
- place any of the light coloured lacquered glasses in front of a uniformly pale surface.
- avoid locating the glass too close to intense sources of heat. If used near to a heater for example, the temperature of the wall must not exceed 45°C.

In kitchens, do not allow the glass to come into direct contact with flames or strong heat sources eg ovens, cooker hobs, very hot utensils or pans.

- allow a gap of 1 - 2mm between the edges of two glass panels.
- ensure that moisture is not allowed to collect behind the glass, either by allowing sufficient drainage and ventilation, or alternatively seal the perimeter with a suitable material.

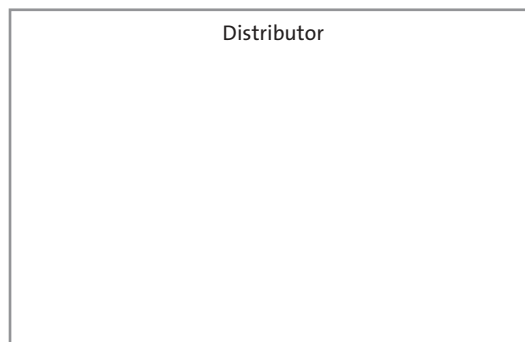
## SGG PLANILAQUE EVOLUTION SAFE

### • Safety glass

A safety film can be applied to the back of the lacquered glass. In the event of breakage, the glass remains adhered to the film, reducing the risk of injury.

### • Installation

If adhesively glazed, ensure direct contact between the glass and the adhesive pads.



Photos : Front cover, Ligne Roset store, Paris, V. Vulverick - p. 2-3, dividing doors and cupboard doors Couliwehr, DM line - p. 2, Mobil Oil France, La Défense - p.3, Richard Ellis, Neuilly, P. Chédal - p. 3, showerroom wall-panelling, Vogelsänger Studio

The colours illustrated are for indicative purposes only. Printing techniques do not make it possible to reproduce the exact colour of the lacquered glass on paper. SGG PLANILAQUE is a registered trademark.

  
SAINT-GOBAIN  
GLASS

Saint-Gobain Glass UK Ltd  
Marketing Department  
Weeland Road, Eggborough, Goole,  
East Riding of Yorkshire, DN14 0FD.  
Tel: 01977 666100  
Fax: 01977 666200

[www.saint-gobain-glass.com](http://www.saint-gobain-glass.com)  
[enquiries.uk.sgg@saint-gobain.com](mailto:enquiries.uk.sgg@saint-gobain.com)

SGG PLANILAQUE<sup>®</sup>  
EVOLUTION

*High durability  
lacquered glass*



# SGG PLANILAQUE® EVOLUTION

*A touch of refinement for interiors !*

## Applications

SGG PLANILAQUE EVOLUTION unites coloured lacquer with the brilliance of glass. It brings colour and ambiance to interiors and is particularly suitable for more demanding locations, such as bathrooms and kitchens.

In homes, offices, hotels, shops and museums, for example, SGG PLANILAQUE EVOLUTION creates smooth, homogenous surfaces as wall-panelling, in furniture and in wardrobe and cupboard doors.

## Advantages

### • Contemporary colours

The SGG PLANILAQUE EVOLUTION range comprises ten references; five light shades, contrasting with four bold colours and one intense black. These radiant and sophisticated colours are in harmony with the elegance of natural materials – wood, metal and stone.

### • Resistance to humidity

Thanks to the special composition of the lacquer, SGG PLANILAQUE EVOLUTION can be used in high humidity rooms, such as kitchens and bathrooms.

### • Durability

As the lacquer is applied to the back of the glass, it is protected from damage, ensuring the durability of SGG PLANILAQUE EVOLUTION's colours. Its brilliance is far superior to that of gloss paints.

### • Safety

Where the use of safety glass is required, a safety film-backed version is available, SGG PLANILAQUE EVOLUTION SAFE.

*A stylishly subtle note of colour for this sliding door (SGG 01 Almond Green)*



*A durable and aesthetic cladding solution for walls and doors (SGG 12 Extra-White).*



## Description

SGG PLANILAQUE EVOLUTION is a lacquered glass, whose opaque and coloured appearance is attained by

depositing and baking highly resistant lacquer onto the rear surface of clear glass.

## Range

Thicknesses : 4 and 6 mm

Dimensions: 3210 x 2400mm;

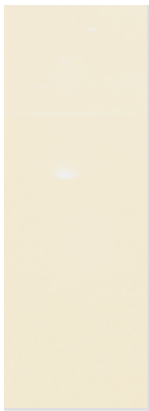
Other thicknesses and stock sheet sizes : please contact us

Weight : 10kg/m<sup>2</sup> for 4mm, 15kg/m<sup>2</sup> for 6mm

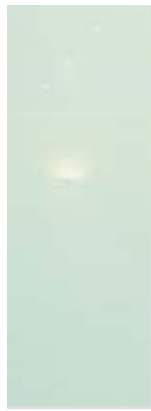
### Colour palette



SGG 12 Extra-White



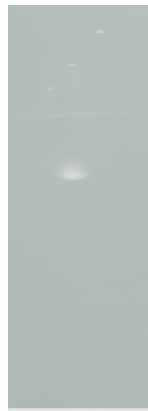
SGG 02 Ivory



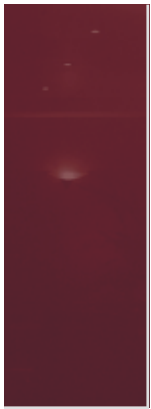
SGG 01 Almond Green



SGG 08 Light Blue



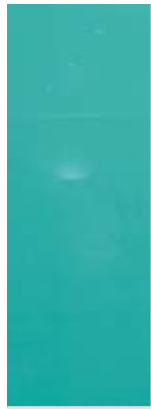
SGG 170 Light Grey



SGG 21 Opera Red



SGG 03 Solar Yellow



SGG 15 Mint Green



SGG 09 Aqua Blue



SGG 20 Black

## Transformation

SGG PLANILAQUE EVOLUTION can be cut, edgeworked and drilled like ordinary silvered glass.

When cutting the glass, place the sheet with the lacquered face down on a clean cutting table to avoid damaging the lacquer.

SGG PLANILAQUE EVOLUTION can be customised by cold-painting decorative patterns or logos onto the glass surface. It can also be sandblasted and engraved. Different effects can be achieved, depending on whether the glass or lacquered face is treated.

Wall-panelling designed for humid rooms (SGG 01 Almond Green).



Sobriety and elegance (SGG 20 Black).

